

TimeKeeper Analytics



TimeKeeper Analytics is a comprehensive business intelligence module that helps you improve workforce performance. It is an executive information system (EIS) that leverages untapped data in the TimeKeeper and TimeCosting suite to help managers make decisions that reduce costs, increase effectiveness, and improve employee satisfaction.

TimeKeeper Analytics allows organizations to:

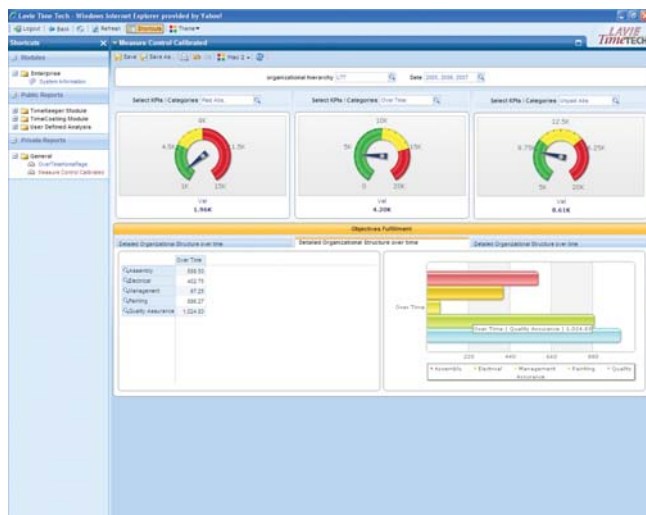
- Analyze data from multiple systems; including Time and attendance, Activity based costing and Accruals to give managers previously unavailable analysis capability.
- Manage with key performance indicators at a glance, allowing managers to respond to lags with immediate corrective action.
- Monitor results over time. See what works, view trends, compare workforce effectiveness between locations, pinpoint problematic areas, and promote accountability throughout the organization.

TimeKeeper Analytics



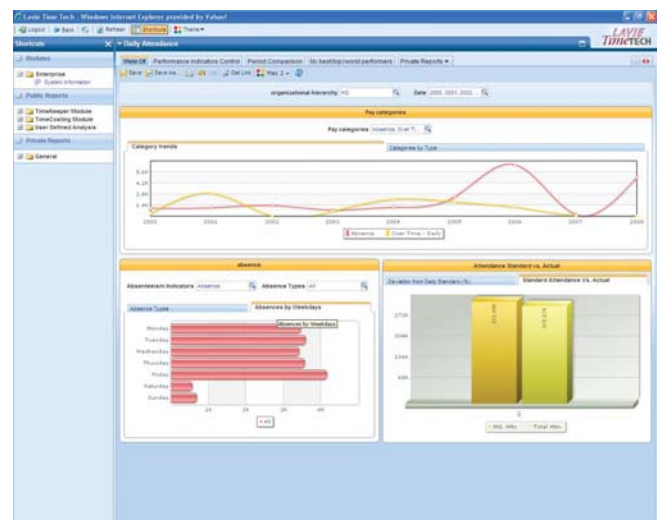
Key Features of TimeKeeper Analytics

- Dashboards: Choose which performance metrics need to be accessible at a glance with customizable views of key data, such as overtime, lateness etc.
- Ad hoc queries: Modify views on the go using the slicer to capture the information you need.
- Export reports to multiple formats, including Microsoft® Excel and HTML.
- Business rules: Integrate data from Lavie TimeTECH's suite components, such as TimeKeeper, TimeCosting, Accruals, iBrowse and more to apply business rules and calculate metrics through extract, transform, and load routines.
- Provide enterprise-ready Time and Attendance business intelligence solutions on top of Lavie TimeTECH's products platform.
- Business intelligence technologies: Utilize the rich reporting and analytic environment including relational and multi-dimensional cubes (OLAP).
- TimeKeeper Analytics takes advantage of the superior performance and scalability of Microsoft® SQL Server® and Microsoft® Office System to provide integrated enterprise solutions for performance measurement, analysis and reporting.
- Choose data, charts and image objects and insert them into the report using drag and drop placement.
- Easy to use and intuitive user interface.



Advantages of TimeKeeper Analytics

- Pay period comparison – Allows comparing two pay periods, in order to identify irregularities.
- Flexible and robust tools that allows any user to retrieve and easily display the "Top 10" or the "Bottom 10" performers in any of the critical measured time and attendance factors and share them inside and outside the corporate firewall.
- A view of the Overtime Analysis by department.



Benefits of TimeKeeper Analytics

- Accesses and displays data from multiple modules.
- Allows users to view data and workforce management information in a way that is useful for them.
- Facilitates communication and collaboration using public folders for implementing a single version of the truth.
- Moves seamlessly from performance monitoring to analysis and reporting with a single-click.
- Helps to spot performance trends by using analysis of KPIs.
- Increases efficiency – Spend less time searching through vast amount of data to find the "right" workforce management information you need to address a specific business issue.
- Automatically uncovers hidden yet critical workforce management information that impacts your decisions and your results using TimeKeeper Analytics proactive intelligence and logic.
- Improves focus – Access the right workforce management information to improve the quality of your decisions and raise the probability of improved results.